

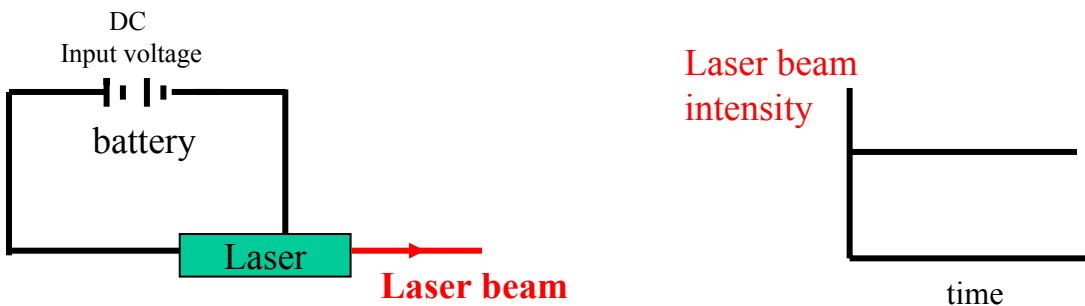
Laser Telecommunication Experiment

BASIC PRINCIPLE

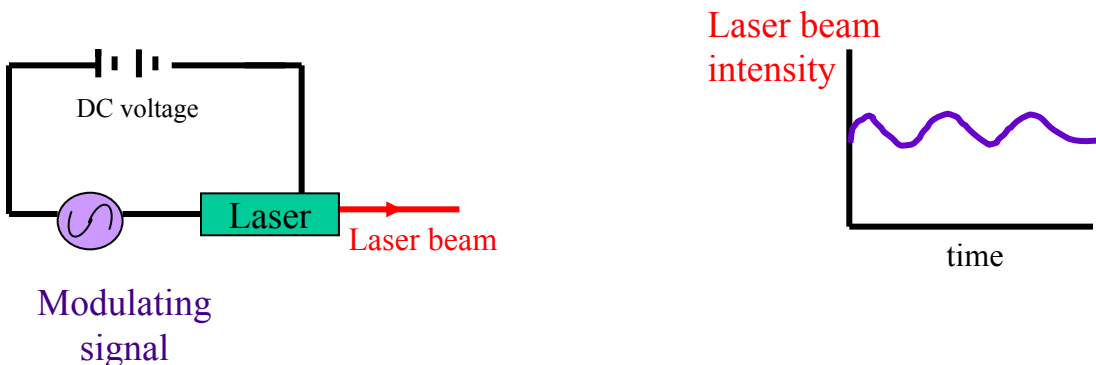
Since the intensity of the output laser beam is proportional to the input voltage, the strategy is:

- To encode a video or audio signal (the modulating signal) into the DC voltage driving the laser.
- The output laser intensity will change accordingly

Laser connected to a circuit **without** a modulator.

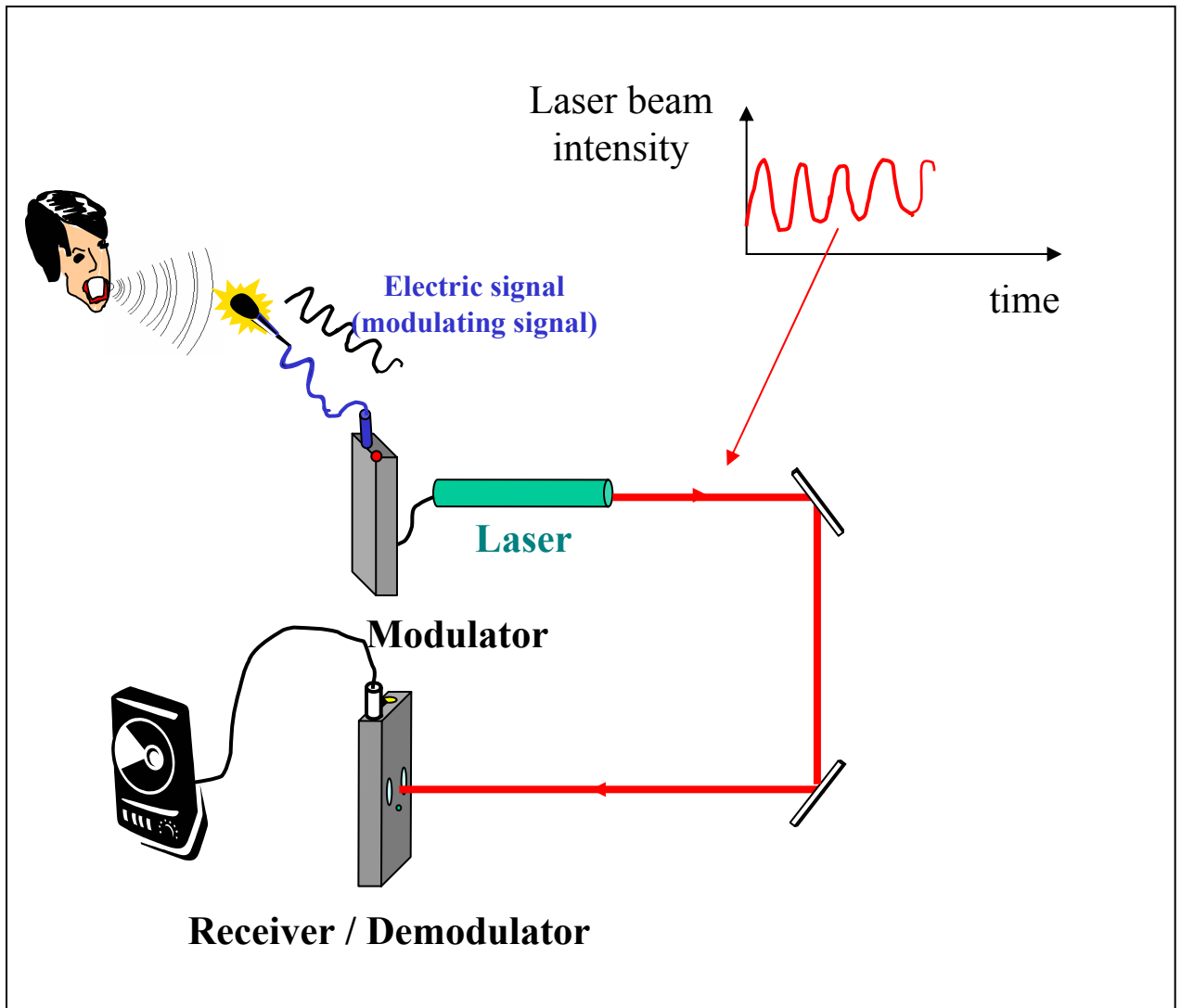


Bottom graph illustrates what happens when a modulating signal is superimposed to the DC voltage driving the laser

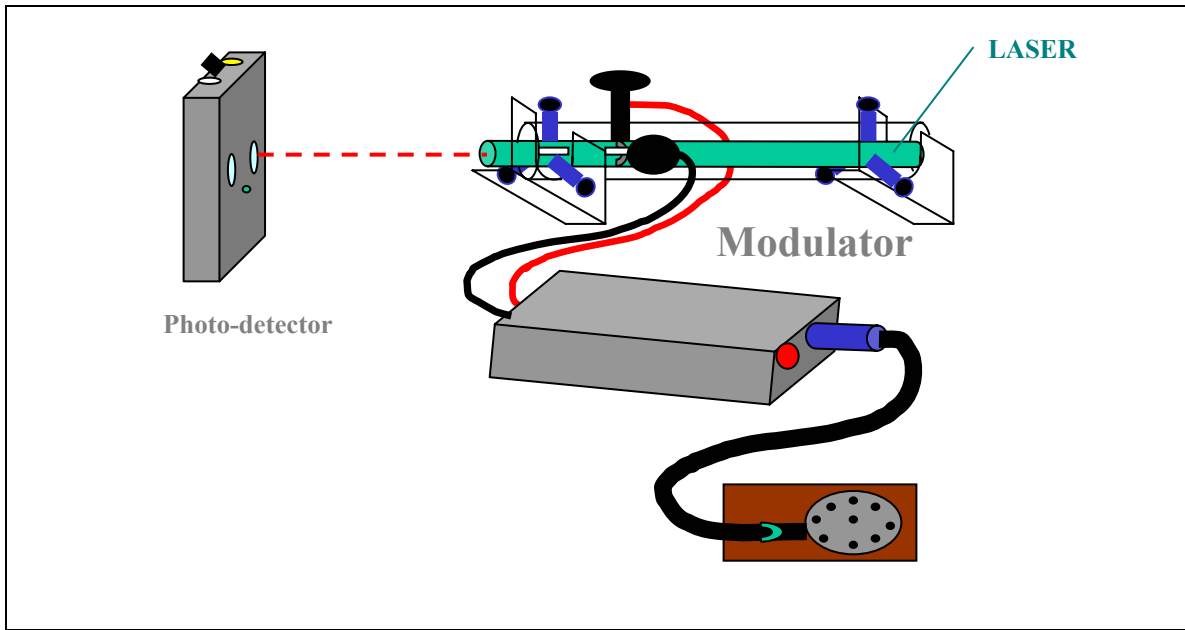


Laser Telecommunication Experiment

This picture represents how human voice (sound signals) is converted by the modulator to a electric signal and is carried by the laser beam into demodulator which convert the optical signal back to electrical signal



Laser Telecommunication Experiment



A diagram of our laser telecommunication kit.